



Stahlwinkel 20

Steel Connection Angle 20

Beschreibung Stahl zur rechtwinkligen Verbindung von zwei Aluminiumprofilen

Material Stahl

Oberfläche schwarz pulverbeschichtet

Liefereinheit 10 Stück

Extras weitere Oberflächen auf Anfrage

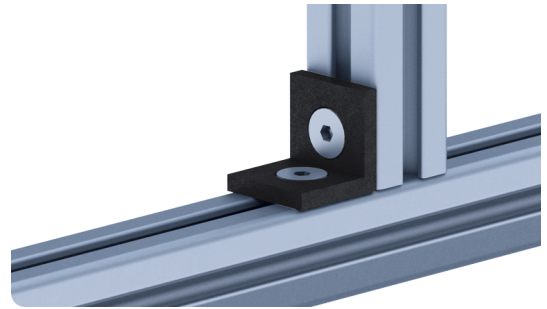
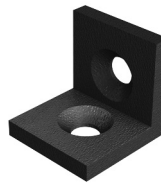
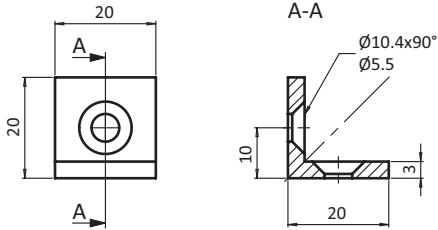
Description *Steel* To connect two aluminum profiles at right angles

Material *Steel*

Surface *Black powder coated*

Pack Quantity *10 pieces*

Specials *Other surfaces on request*



Stahlwinkel 20
Steel Connection Angle 20

Gewicht [g]
Weight [g]

Teil-Nr.
Part #

15.3

093WU201S